

# VKP80II

## 80MM RECEIPT/TICKET PRINTER

**CUSTOM**<sup>®</sup>



**1** WORLD  
WIDE  
NUMBER  
**ONE!**



**SAVE MONEY  
WITH PLANNING  
ON-SITE SERVICES!**

### MAIN FEATURES

- 200dpi best printing quality
- Paper width from 60 to 82.5 mm
- Paper thickness from 60 to 120 g/m<sup>2</sup>
- Speed > of 220 mm/sec
- Ejecting & Retracting (speed > of 1000 mm/s)
- Barcodes: UPC-A, UPC-E, EAN13, EAN8, CODE39, ITF, CODABAR, CODE93, CODE128, CODE32, PDF417, DATAMATRIX (ethernet version)
- Fonts: European, International, Arabic, Thai, Vietnamese, Portuguese, Nordic, Chinese and Russian
- Highly reliable cutter: > of 1.500.000 cuts
- MTBF > of 590.000 hours
- Sensors: paper end, black mark, ticket presence, printing unit opening and paper low on roll holder

### EXCLUSIVE FEATURES

- Anti Jamming System
- Automatic Status Back
- Adjustable paper-in for different paper width
- Self-balancing paper roll support
- Illuminated paper bezel
- Multiposition paper roll
- High power motor feeder for huge paper roll (up to 300 mm Ø)
- Automatic ticket ejecting
- Automatic ticket retracting back



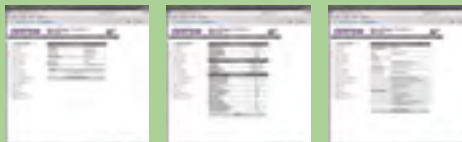
### MOST COMMON APPLICATIONS

- Self-service kiosks
- ATMs & Banking machine
- Gaming machine
- Parking payment terminal
- Vending machine
- Fiscal receipt/invoice kiosks



### SOFTWARE FEATURES

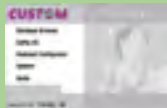
- Total remote management by internal Web Server
- Automatic email sending for service purpose
- Status Monitor DLL
- Full Windows Status Monitor Driver
- Self-installing Driver for Win2000/XP/Vista /7 (+64bit support)
- Linux Driver
- WOSA XFS Driver
- OPOS & JavaPOS Driver
- Fiscal Suite SW (for fiscal version)



WEB SERVER EMBEDDED



FULL STATUS MONITOR



FISCAL SUITE



ETHERNET VERSION WITH WEB SERVER



FISCAL VERSION WITH ELECTRONIC JOURNAL

### AVAILABLE VERSION

- Serial+USB 24V
- Serial+USB+Ethernet 24V
- Fiscal with electronic journal on MMC 24V

